



مركز الامارات لفحص المواد
Emirates Center For Mat. Testing



**EMIRATES CENTER FOR MATERIAL
TESTING**

**QUALITY & INTEGRITY
ACCURACY**

PREQUALIFICATION

تليفون: 037222223 – فاكس: 037214848
ص ب: 18186 – العين – الإمارات العربية المتحدة

Tel. : 03-7222223 – Fax: 03-7214848
P.O Box: 18186 –ALAIN – U. A .E



مركز الامارات لفحص المواد
Emirates Center For Mat. Testing

TABLE OF CONTENTS

INTRODUCTION

QUALITY POLICY

ORGANIZATIONAL CHART

LICENSES

ECMT SERVICES

DRILLING, SAMPLING & FIELD TESTING EQUIPMENTS

TESTING EQUIPMENT

LABORATORY TESTING FACILITIES

LIST OF SOIL INVESTIGATION

LIST OF EMPLOYEES

LIST OF CONSULTANTS AND CONTRACTORS

Our web site www.emiratescenteruae.com



تليفون: 037222223 – فاكس: 037214848
ص ب: 18186 – العين – الإمارات العربية المتحدة

Tel. : 03-7222223 – Fax: 03-7214848
P.O Box: 18186 –ALAIN – U. A .E



INTRODUCTION

COMPANY PROFILE

EMIRATES CENTER FOR MATERIAL TESTING (ECMT) Laboratory is a professionally managed laboratory offering soil investigation services, material testing, and chemical services.

Established in the year 2003, our laboratory has a well-equipped permanent facility in Al Ain, UAE.

ECMT provides most services in GEOTECHNICAL ENGINEERING

Ranging from site investigation, field sampling and testing, construction material testing, evaluation of existing structures and geophysics studies.

The material testing department is capable of conducting physical tests and chemical analysis of a variety of materials of natural as well as industrial origin.

The sampling department is capable of collecting representative samples in a scientific manner.

ECMT Management holds legal responsibility for its operation and is organized to operate in accordance with the requirements of ISO/IEC 17025,

ECMT is committed to carrying out its testing activities in such a way as to satisfy the needs of the customer and regulatory authorities and to satisfy the requirements of International Standard ISO/IEC 17025. The Laboratory is also committed to comply and satisfy requirements of the Emirates National Accreditation Services (ENAS) as well as all local legal requirements.

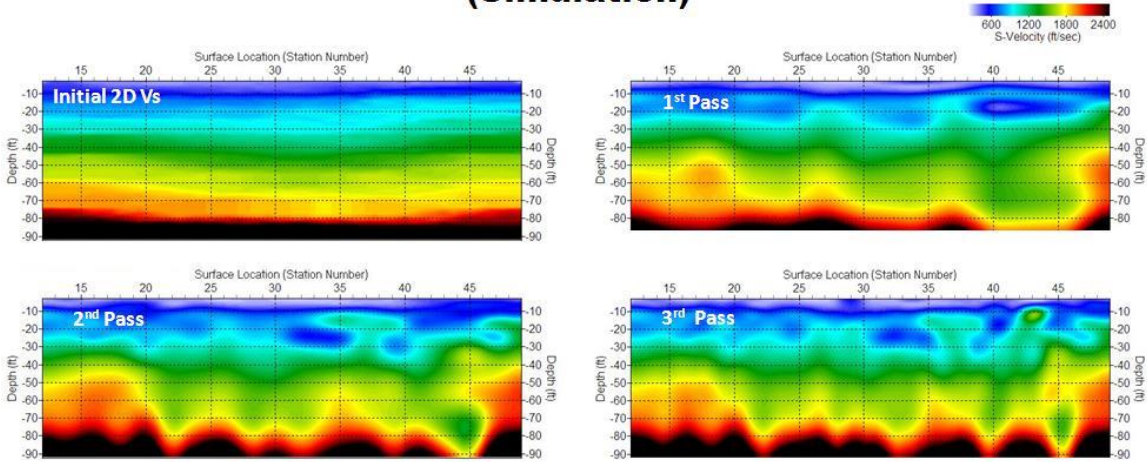
These services are provided by ECMT with the objective of meeting the needs of our clients and the market demand in construction projects.

ECMT Testing Laboratory has professional and experienced administrative and technical staff, ECMT capable of providing services in the areas of Geo technical Investigations, Soil Testing, Aggregate / Rock Testing and Concrete Testing and geophysics studies.

Geophysics department

WE carry out professional geophysical and survey program to assess and advice on identify potential geologic hazards for developing this site such as shallow/deep cavities, Falaj channel systems, loose soil materials and zones of significant discontinuities within the depth of interest up to 30 m bgl as per M/S AAM specifications.

**2D Vs Inversion
(Simulation)**



A simulation of the inversion approach that uses the 2D Vs map from the normal 2D survey as an initial model. Subsequent iterative process of updating the model shows a progressive improvement of lateral resolution.





- ★ Site and Geotechnical Investigation
- ★ Fill and Road Material Testing
- ★ Construction Material Testing
(Soil, Aggregate, Concrete and Steel Testing)
- ★ Chemical Analysis of (Soil, Water
Aggregates, Cement & Concrete)
- ★ Evaluation of Existing Structures
- ★ Consultation on Constructions
- ★ Material and Technology
- ★ Quality Control on Construction
Site and Production Plants
- ★ Fresh and Hardened Concrete

And many.....
many...
other Tests



Al Ain - Tel : 03-7222223, Fax : 03-7214848, P.O. Box : 18186

E-mail: ecmtabu@gmail.com

ENAS
NAT. 109
17021
Emirates National Accreditation System

Soil lab

تليفون: 037222223 - فاكس: 037214848
ص ب: 18186 - العين - الإمارات العربية المتحدة

Tel. : 03-7222223 - Fax: 03-7214848
P.O Box: 18186 - ALAIN - U. A .E

EMIRATES CENTER
FOR MATERIALS TESTING

E.C.M.T

مركز الإمارات
لفحص المواد



E.C.M.T EMIRATES CENTER FOR MATERIALS TESTING



E.C.M.T PERFORMS
DIFFERENT KINDS OF LABORATORY TESTS

SOIL INVESTIGATION

- Drilling (Rotary with Mud and HS AUGERS, etc....)
- Sampling, Field and Laboratory Testing
- Engineering Analysis
- Recommendation and Reporting

FILL AND ROAD MATERIAL

- Proctor, Field Density, CBR, Plate Bearing, etc....

CONCRETE TESTING

- Mix Design, Compressive Strength
- Hammer Test, Core Test, etc....

AGGREGATE TESTS

- Sieve Analysis
- Specific Gravity
- Water Absorption
- Flakiness and Elongation Index ... etc

CHEMICAL ANALYSIS

- Water, Aggregate and Soil
- Cement and Concrete

**EVALUATION OF BUILDINGS
AND STRUCTURES**

QUALITY CONTROL FOR :

- Concrete Production Plants ,Concrete Construction
- Road Construction , Back-fill materials.

OTHER FACILITIES

- Block, Paving Block, Curbstone, Tile and Building Stone
- Topography and Geophysical Survey Services.



DESTINATION
CORRECT TO :

MEET YOUR
EXPECTATIONS
AND NEEDS

SPECIAL
SERVICES

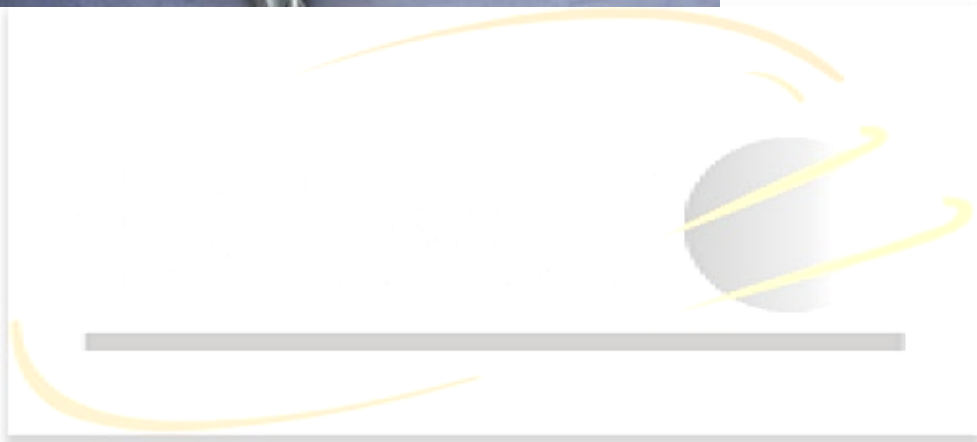
HIGH
QUALITY

SAVING TIME
AND COST

For more inquiries
Contact us

At Ain - Industrial Area,
Behind Bin Fadil Ready Mix
+971 3 722 22 23
Ecmtabu@gmail.com













Quality Policy

We, the stakeholders (top management and employees) of ECMT are fully committed to provide high Quality laboratory testing service that is accepted and approved our customers with maximum satisfaction.

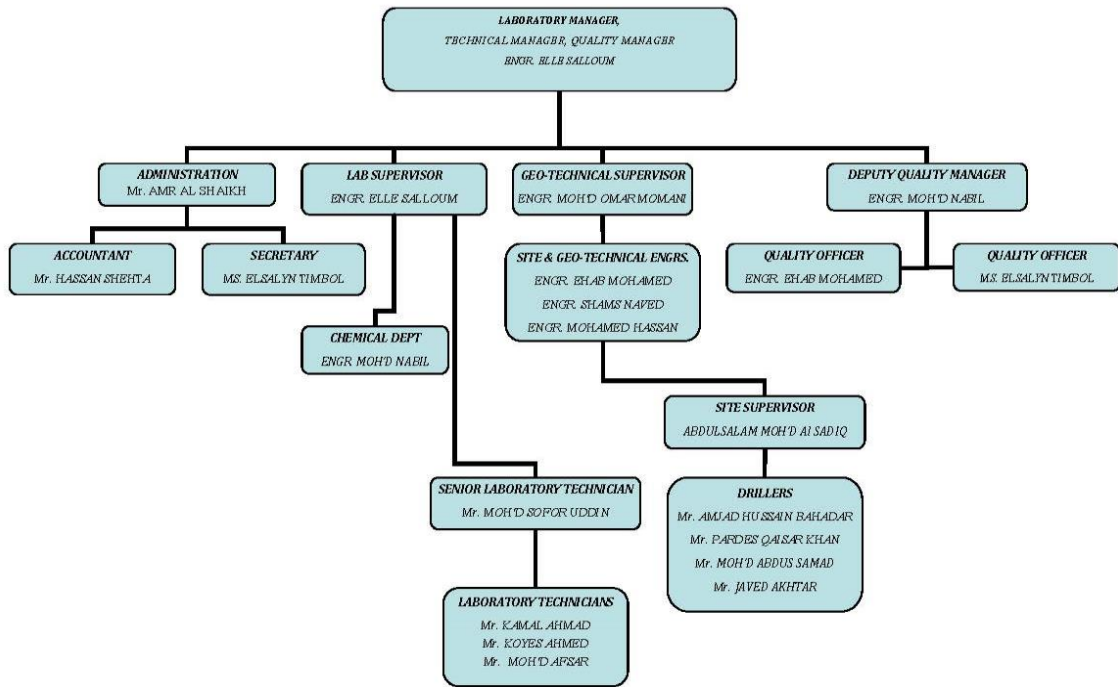
This commits us to the following obligations:

- ✚ Providing Accurate and Scientific laboratory testing services of consistent quality conforming to the client requirements and ISO 17025:2017 International Standard.
- ✚ Adherence to the legal requirement, regulations and contractual obligations including Confidentiality and Impartiality.
- ✚ Updating and monitoring the Lab Quality Management System with a view of continually improving it.
- ✚ Ensure effective communication, both internal and external, to ensure a program of continual quality improvement.
- ✚ Engage our employees to set measureable objectives and targets for LQMS, revise objectives through regular review, audit and monitoring its performances.
- ✚ Maintain skilled and competent professionals and ensure their proficiency through professional and technical training programs.

Compliance with the above by all of us, will ultimately lead to maintain and achieve highest levels of customer satisfaction by means of globally accepted standards.

	EMIRATES CENTER FOR MATERIAL TESTING ORGANIZATION CHART	Doc No : ECMT/QM/A-II Rev No : 00 Effective date : 10/10/2019
---	--	---

Last Up Date 01-03-2021





مركز الإمارات لفحص المواد
Emirates Center For Mat. Testing



Certificate of Accreditation

مركز الإمارات لفحص المواد (NAL 109)

العين، الإمارات العربية المتحدة

حاصل على الاعتماد في الفحوصات المذكورة في وثيقة المجال المرفقة وفقاً للمواصفة الدولية، ISO/IEC 17025

Emirates Material Testing Center (NAL 109)

Al Ain, UAE

Accredited according to the ISO/IEC 17025 Standard to undertake tests as specified in the attached Accreditation Scope



الدكتورة رحمة محمد العاصمي
مدير إدارة الاعتماد الوطني



Accredited on 2019/12/08 تاريخ منح الاعتماد
Expires on 2022/12/07 تاريخ الانتهاء

Accreditation in accordance to the ISO/IEC 17025:2017 Standard "General requirements for the competence of testing and calibration laboratories" and the relevant ENAS and ILAC requirements.

This certificate is invalid without the attached scope of accreditation, which subjected to annual surveillances as per ENAS procedure. Certificate can be updated or re-issued until the expiry date defined above. The validity of the certificate is subjected to continuous compliance with the requirements of the accreditation system. The lab is responsible for the results of its testing.

Initial Accreditation Date: 07/12/2016

ACF 11-21; Rev 3;

1 وفقاً لمتطلبات المواصفة الدولية ISO/IEC 17025:2017 "المتطلبات العامة لكفاءة مختبرات الفحص والمعايرة" والمتطلبات ذات العلاقة الخاصة بنظام الاعتماد الوطني الإماراتي ENAS والمنظمة الدولية لاعتماد المختبرات ILAC.
مجال الاعتماد جزء أساسي من هذه الشهادة حيث تخضع مجالات الاعتماد المذكورة في الوثيقة المرفقة لعمليات متابعة لاحقة من قبل نظام الاعتماد الوطني الإماراتي ENAS. وتعتبر هذه الشهادة صالحة وقابلة للتحديث وإعادة الاصدار حتى تاريخ انتهاء المومن اعلاه شرطاً استمرار المختبر المذكور العمل في تطبيق متطلبات نظام الاعتماد سالفة الذكر. يتحمل المختبر مسؤولية نتائج الفحص الصادرة عنه.

تاريخ منح الاعتماد لأول مرة: 07/12/2016

ABU DHABI, UNITED ARAB EMIRATES - أبوظبي، الإمارات العربية المتحدة - P.O.BOX 2166

DUBAI, UNITED ARAB EMIRATES - دبي، الإمارات العربية المتحدة - P.O.BOX 48666

مركز الاتصال: 600 565554 CALL CENTER

www.enas.gov.ae



تليفون: 037222223 - فاكس: 037214848
ص ب: 18186 - العين - الإمارات العربية المتحدة

Tel. : 03-7222223 - Fax: 03-7214848
P.O Box: 18186 -ALAIN - U. A. E

Scope Appendix

Certificate Number	A-L-16-00163		رقم الشهادة
Date of Issuance	2016-12-07		تاريخ الإصدار
Appendix Number	A-L-16-00163-A-1		رقم الملحق
Subject	Emirates National Accreditation System Accreditation Scope Appendix	نظام الإعتماد الوطنى الاماراتى ملحق مجالات الإعتماد	العنوان
Issued To			صادر إلى
CAB Name	Emirates Center For Material Testing	مركز الامارات لفحص المواد	اسم جهة تقييم المطابقة
CAB Type	Testing and Calibration Laboratories	مختبرات الفحص و المعايرة	نوع جهة تقييم المطابقة
CAB Sub Type	Testing Laboratories	مختبرات فحص	فرع جهة تقييم المطابقة

#	Test Material Matrix	Types of Test / Properties Measured	Tested Method / Standard
1	Soil	Standard Penetration Test - SPT	BS 1377: 1990, Part 9, AMD 8264-1995
2	Soil	Soil Sampling	BS 5930:1999+A2:2010
3	Soil	Description and Classification of Soil And Rock	BS 5930:1999+A2:2010
4	Soil	Particle size Distribution - Sieve Analysis	BS 1377:1990, P2, Cl9.2&9.3
5	Soil	Hydrometer	BS 1377:1990, P2; AMD 9027-1996
6	Soil	Determination of Water - moisture - Content of Soil and Rock by Mass	BS 1377:1990, P2; AMD 9027-1996
7	Soil	Atterberg Limits -liquid limit plastic limit and plasticity index of soils	ASTM D 4318-10
8	Soil	In-situ Density by Sand Replacement Method	ASTM D 1556 / ASTM D 1556M-15
9	Soil	Dry Density Moisture Content - Modified Proctor	ASTM D 1557-12

This scope of accreditation is invalid without certificate of accreditation and cannot be used as a separate document.

This is an electronic certificate and does not require stamp and signature. Visit ESMA website www.esma.gov.ae to verify this certification. Any alternation or modification on this certificate will affect its validity.

مجال الإعتماد غير صالح بدون شهادة الإعتماد ولا يمكن استخدامه كوثيقة منفصلة.

هذه الشهادة صدرت إلكترونياً ولا تحتاج إلى ختم وتوقيع. للتأكد من صحة هذه الشهادة يرجى زيارة موقعنا على الإنترنت www.esma.gov.ae والدخول إلى خدمة الإستعلام عن المستندات الصادرة أى كسط أو تغيير فى هذه الشهادة يلغيها.

هاتف: +971 4 2944434
فاكس: +971 4 2944428

ص.ب 48666 دبي، الإمارات العربية المتحدة
P.O.BOX 48666, Dubai - United Arab Emirates



600-565554
esma.gov.ae

هاتف: +971 2 4032700
فاكس: +971 2 6715999

ص.ب 2166 أبو ظبي، الإمارات العربية المتحدة
P.O.BOX 2166, Abu Dhabi - United Arab Emirates

تليفون: 037222223 - فاكس: 037214848
ص ب: 18186 - العين - الإمارات العربية المتحدة

Tel. : 03-7222223 - Fax: 03-7214848
P.O Box: 18186 - ALAIN - U. A. E



Scope Appendix

10	Soil	Acid soluble sulphate content of soil	BS 1377: 1990 Part 3 Cl 5.2 & 5.5; AMD 9028-1996
11	Soil	Water soluble sulphate content of soil	BS 1377: 1990 Part 3 Cl 5.3 & 5.5; AMD 9028-1996
12	Soil	Acid soluble chloride content of soil	BS 1377: 1990 Part 3 Cl 7.3; AMD 9028-1996
13	Soil	Water soluble chloride content of soil	BS 1377: 1990 Part 3 Cl 7.2; AMD 9028-1996
14	Soil	pH of soil	BS 1377: 1990 Part 3 Clause 9; AMD 9028-1996
15	Water	pH of ground water	BS 1377: 1990 Part 3 Clause 9; AMD 9028-1996
16	Water	Sulphate content of ground water	BS 1377: 1990 Part 3 Cl 5.4 & 5.5; AMD 9028-1996
17	Water	Chloride content of ground water	BS 1377: 1990 Part 3 Cl 7; AMD 9028-1996
18	Water	Ground Water Level Measurements	BS 5930:1999 and A2-2010
19	Water	Ground Water Sampling	BS 5930:1999 and A2-2010
20	Rock	Unconfined Compression Test	ASTM D 7012-14
21	Rock	Preparation of Rock Core	ASTM D 4543-08
22	Rock	Rock Quality Designation	BS 5930:1999+A2:2010
23	Rock	Core Recovery	BS 5930:1999 and A2-2010
24	Geotechnical Investigation	Reporting	BS 5930:1999 and A2-2010
25	Concrete	Compressive Strength of concrete cube including curing	BS EN 12390-3:2002
26	Concrete	Density of Concrete cube	BS EN 12390-7:2009
End			
Program Manager			



This scope of accreditation is invalid without certificate of accreditation and cannot be used as a separate document.

This is an electronic certificate and does not require stamp and signature. Visit ESMA website www.esma.gov.ae to verify this certification. Any alternation or modification on this certificate will affect its validity.

مجال الإعتقاد غير صالح بدون شهادة الإعتقاد ولا يمكن استخدامه كوثيقة منفصلة.

هذه الشهادة صدرت إلكترونياً ولا تحتاج إلى ختم وتوقيع. للتأكد من صحة هذه الشهادة يرجى زيارة موقعنا على الإنترنت www.esma.gov.ae والدخول إلى خدمة الإستعلام عن المستندات الصادرة أى كسقط أو تغيير فى هذه الشهادة بلغيها.

هاتف: +971 4 2944434
فاكس: +971 4 2944428

ص.ب 48666 دبي، الإمارات العربية المتحدة
P.O.BOX 48666, Dubai - United Arab Emirates



600-565554
esma.gov.ae

هاتف: +971 2 4032700
فاكس: +971 2 6715999

ص.ب 2166 أبو ظبي، الإمارات العربية المتحدة
P.O.BOX 2166, Abu Dhabi - United Arab Emirates

تليفون: 037222223 – فاكس: 037214848
ص.ب: 18186 – العين – الإمارات العربية المتحدة

Tel.: 03-7222223 – Fax: 03-7214848
P.O Box: 18186 – ALAIN – U. A. E

Professional License

رخصة مهنية

License No	:	CN-1125608	:	رقم الرخصة
ADCCI No	:	144103	:	عضوية الغرفة
Establishment Card MOHRE	:		:	وزارة الموارد البشرية والتوطين بطاقة المنشأة
Establishment Card GDRFA	:		:	الإدارة العامة للإقامة وشؤون الأجانب - بطاقة المنشأة
Legal Form	:	Establishment	:	الشكل القانوني
Trade Name	:	Emirates Material Testing Center	:	الإسم التجاري
Establishment Date	:	16/02/2003	:	تاريخ تأسيس المنشأة
Issue Date	:	01/07/2019	:	تاريخ الإصدار
Expiry Date	:	04/07/2020	:	تاريخ الإنتهاء

الصفة Role	الجنسية Nationality	المالك / الشركاء Owners / Partners	الرقم No.
مالك Owner	الإمارات العربية المتحدة United Arab Emirates	سعيد احمد سرور سلطان الظاهري SAEED AHMED SOROOR SULTAN ALDHAHERI	20091451

Commercial Activities	:	الأنشطة التجارية
- Building material testing lab		- مختبر فحص مواد البناء
- Soil testing services		- خدمات فحص التربة
- Geological and geophysical consultancy and studies and researches		- الاستشارات والدراسات والبحوث الجيولوجية والجيوفيزيائية
Address	:	الغوان
		- صناعية العين, بنلاية : سالم علي محمد عصفان المنصوري
		(تم تحصيل رسوم خدمات الدفاع المدني)

وثيقة معتمدة وصادرة بدون توقيع أو ختم من دائرة التنمية الاقتصادية - أبوظبي. للتحقق من صحة البيانات الواردة في الرخصة برجاء زيارة الموقع <http://www.ded.abudhabi.ae>
Approved document issued without signature or stamp by the Department of Economic Development - Abu Dhabi. To verify the license kindly visit <http://www.ded.abudhabi.ae>
This Document is Considered As Commercial Register

تعتبر هذه الوثيقة بمثابة سجل تجاري

Official Email	:	ma3any20022@gmail.com	:	البريد الإلكتروني الرسمي
Official Mobile	:	971525272129	:	رقم التواصل الرسمي



<http://ded.abudhabi.ae>



شهادة تسجيل لضريبة القيمة المضافة في الامارات العربية المتحدة
Certificate of Registration for Value Added Tax in the United Arab Emirates

The Federal Tax Authority certifies that the entity below is a registered person for Value Added Tax in the UAE
تشهد الهيئة الاتحادية للضرائب أن الجهة التالية مسجلة لضريبة القيمة المضافة في الامارات العربية المتحدة

Full Arabic legal name	مركز الامارات لفحص المواد	الاسم القانوني الكامل باللغة العربية
Full English legal name	EMIRATES MATERIAL TESTING CENTER	الاسم القانوني الكامل باللغة الانجليزية
Registered address	استثمار بن عفاص 1114, السادس, الصناعية ليناقي, العين, أبوظبي, الإمارات العربية المتحدة, 971559590693+, 18186	العنوان المسجل
Tax Registration Number	100566295000003	رقم التسجيل الضريبي
Effective Registration Date	01/01/2018	تاريخ التسجيل الفعلي
First VAT Return Period	01 Jan 2018 - 31 May 2018 and quarterly thereafter	فترة أول إقرار لضريبة القيمة المضافة
VAT Return due date	28 Jun 2018	تاريخ استحقاق إقرار ضريبة القيمة المضافة
Start and end dates of Tax periods:	1 Mar to 31 May, 1 Jun to 31 Aug, 1 Sep to 30 Nov, 1 Dec to 28/29 Feb	بداية ونهاية الفترات الضريبية

يرجى التأكد من صحة تفاصيل الشهادة. يجب إبلاغ الهيئة الاتحادية للضرائب في حال تغيير الاسس التي حصلت فيها على رقم التسجيل الضريبي الخاص بك.

Please check that the details on this certificate are correct. You must inform the Federal Tax Authority of any change on the basis of which you obtained your Tax Registration Number.



Issuing Date:

06/04/2018

تاريخ الإصدار

ECMT SERVICES

The services which are provided by ECMT are summarized as the following:

A. Site and Geotechnical Investigation:

- Site Investigation (Drilling, sampling, field testing and laboratory Testing).
- Conduct geological and geotechnical surveys and mapping.
- Investigation and analysis for slope stability.
- Provide consultation on soil improvement and stabilization.
- Stabilization of soil under foundation and design foundation.
- Design of earth retaining structures.
- Consultation on special geotechnical problems.

B. Sampling and Testing of Construction Materials

- Construction material tests including concrete, soil, rock, Aggregates and stones.
- Concrete mix design.
- Quality control.
- Chemical analysis of water, aggregates, concrete and soil.
- Consultation on construction materials and materials technology.
- In-situ testing of concrete and soil.
- Calibration of linear measurement and concrete plant scales.

C. Evaluation of Structures:

- Assessment and survey of the existing structures condition and The necessary actions to be taken
- Apply program of all necessary tests to determine the cause of Damage.
- Report on findings and recommendations of detailed procedure For repair.
- Recommendation for future monitoring, inspection and corrosion Preventive measures.



DRILLING, SAMPLING AND FIELD TESTING EQUIPMENTS

1. DRILLING RIGS, SAMPLING & TESTING EQUIPMENT INVENTORY

- Mobile Drill B-40 Type drill rig all hydraulic drilling machines mounted on Bedford 4-Wheel Truck.
- C.M.E. - 55 Drilling rig mounted on Bedford 4-Wheel Truck
- Mobile Drill B-53 Type drill rig mounted on Bedford 4-Wheel Truck.
- Mobile Drill B-53 Type drill rig mounted on Nissan 4-Wheel Truck
- Mobile Drill GMS-150 Type drill rig mounted on Nissan 4-Wheel Truck
- Olaimbia UK Model Mechanical drilling rig mounted on Bedford 4-Wheel Truck.
- Double tube core barrels for hard soil and rock coring (98mm outside & 76mm inside diameter and other size).
- Wire line Core Barrels (Triple Tube Core Barrels)
- Single core barrels for hard soil and rock coring (with various diameter & lengths)
- Split barrel tubes with cone accessory for Standard Penetration Test (SPT).
- Shelby tubes, 3 inch diameter for soil sampling.
- Casing with various diameters.
- Drilling rods with various diameters and lengths.
- Auger Rode with various diameters and lengths
- Hollow Steam Auger.
- Water and mud pumps with various capacities.
- Air Compressor
- Drilling Bits of different types and sizes.
- Grouting Machine
- Plate Bearing Testing Apparatus
- Field CBR Testing Apparatus

2. LABORATORY EQUIPMENT INVENTORY

2.1 General Laboratory Equipment

- Heavy duty solution balances
- Electronic balances with various capacity and resolution
- Large scale sample balance
- Riffle boxes of various sizes
- Drying ovens
- Microwave ovens
- Muffle furnace
- Hot plates
- ASTM sieve sets

- BS sieve sets
- Thermometers
- Vernier calipers, scales, measuring types and rulers
- Sample containers, moisture cans and sample trays
- Magnetic stands
- Dial indicators
- Stopwatch
- Proving rings
- Spirit levels
- Trolleys
- Mortar and pestle
- Scoops, chisels and hammers
- Pycnometer bottles and sample jars
- In-house computers and printers

2.2 Soil and Rock Sampling and Testing Equipment

- ASTM sets of field density cones, sand container and calibration containers
- BS sets of field density cones, sand containers and calibration
- Calibration sands as BS and ASTM
- Proctor moulds and hammers (Standard and Modify)
- CBR moulds (BS and ASTM)
- Plate Bearing testing set with dial gauges
- Loading machine
- Unconfined compressive strength apparatus
- Point load tester
- Atterbeg limit apparatus
- Speedy moisture tester
- Saw cutter
- Hydrometers

2.3 Concrete and Cement Sampling and Testing Equipment

- Cube crushing machines
- Crushing machines for blocks, bricks and transverse strength
- Impermeability to water test apparatus
- Chloride content tester
- Vacuum Pumps
- Schmidt Hammer
- Cube moulds, slump cone and mortar moulds
- Laboratory mixer
- Core cutting saw and capping mould
- Water curing tanks

- Ultrasonic tester
- Bleeding apparatus

2.4 Aggregate Testing Equipment

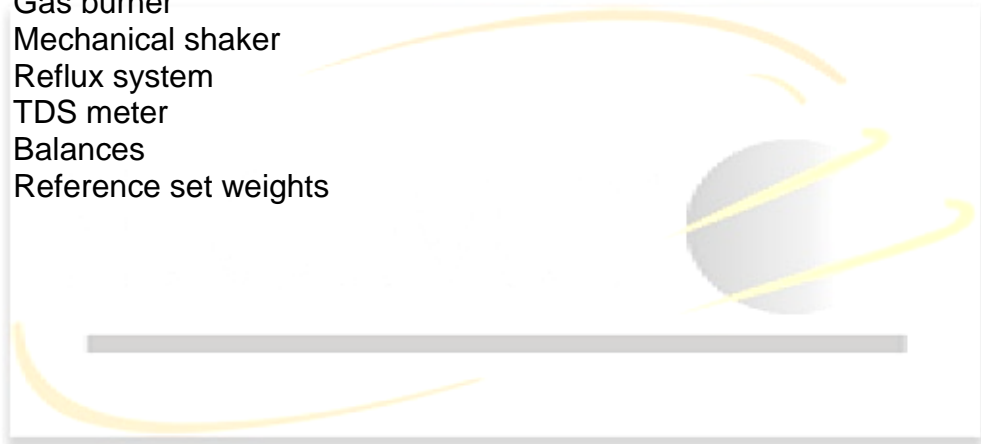
- BS and ASTM sieve sets
- Soundness sieve sets and containers
- Sand equivalent value equipment
- Flakiness and elongation scales
- Specific gravity equipment
- 10% fines test
- Aggregate crushing value apparatus

2.5 Reinforcing Steel Test Equipment

- Universal testing machines
- Grinder
- Bending and re-bend test accessories

2.6 Chemical Analysis Apparatus

- Water distillatory
- Conical flasks, pipettes, burettes
- Measuring cylinders, beakers and aspirator
- Vacuum pump
- Muffle furnace
- Crucibles and desiccators
- Reagents, filter papers
- pH tester
- Gas burner
- Mechanical shaker
- Reflux system
- TDS meter
- Balances
- Reference set weights



PROJECT NAME	CLIENT	LOCATION
Al Rawdah Palace Sheikh Khalifa Bin Zayed Al Nahyan	ACC Engineering Consultant	Al Rawda
Brary Ain Al Fayda	Al Qudra Engineering Consultant	Jabal Hafeet
Commercial Building	Al Mirsal Gen. Cont. Est.	Al Jahli
Mosque	Gamat Al Madina Cont.	Al Nahel
Commercial Building	Emirates Int'l Proj. Gen.Cont.Est.	Al Sanaiya
Commercial Building	Al Estiwaa Gen. Cont. Est.	Al Sanaiya
Commercial Building	Bin Ham Gen. Cont. Est.	Asharej
Commercial Building	Ghantooth Trans. & Gen. Cont. Est.	Al Sanaiya
Commercial Building	Shams Al Amara Gen. Cont.Est.	Al Sanaiya
Commercial Building	Humaid Al Arti Gen. Cont. Est.	City Center-Hai Al Salama
Private School	Al Hashimi Gen.Cont.Est.	Al Ain
Private School	Al Mothalath Al Fedi Gen.Cont.Est.	Al Hili
Private School	Nassem Al Sharq Bldg.& Const.	Falaj Hazza
Commercial Building (Supermarket)	Nassem Al Sharq Bldg.& Const.	Al Bateen
Commercial Building	Noor Group Gen.Cont.Est.	Al Murabaa
Commercial Building	Al Takamul Al Handasi Eng. Consultants	Al Jimi
Commercial Building	Future House Gen.Cont.Est.	Asharej
Commercial Building	Future House Gen.Cont.Est.	Asharej
Stores & Company Camps	Hateen Sewerage Cont. Est.	Al Khair
Factory	Al Duha for Steel Mfg.	Ind'l City
Factory	Tanfeez Eng. Consultant	Ind'l City
Grand Mosque	Arabian Construction Company	Truck Rd., Al Rawdha
Mosque	Ebla Eng. Consultants.	Al Nahel
Mosque	Emicon Eng. Consultants	Al Sarooj
PROJECT NAME	CLIENT	LOCATION

Car Parking	Arabian Construction Company	Qseewrah
Labour Camp	Arabian Construction Company	Qseewrah
Mosque	Hamburg Eng. Consultant	Al Khrair
Mosque	Sketch Eng. Consultant	Remah
Mosque	Oasis Arch Eng. Consultant	Al Qua'a
Commercial Building	Granada Eng. Consultant	Al Hili
Coffee Shop	Al Raqi Eng. Consultant	Al Jimi
Shops and Office	Legend Eng. Consultant	Al Khrair
Labour Camp	Pure Design Eng. Consultant	Al Khrair
Mosque	Al Andalus Palace Eng. Consultant	Al Yahar
Mosque	Pure Design Eng. Consultant	Al Dhaher
Mosque	Smart Projects for Geo-Physical Studies	Al Towayya
Commercial Building	Dar Al Handasa & Al Emara	Al Jahili
Commercial Building	Taikos Eng. Consultant	Al Masoudi
Commercial Building	Al Maghrib Al Arabi Eng. Consultant	Al Hili
Industrial Building	Emirates Egyptians Eng. Consultant	Al Sanaiya
Industrial Building	Modern Design Eng. Consultant	Shiab Al Ashkar
Mosque	Funoon Al Amara Eng. Consultant	Zakher
Mosque	Granada Eng. Consultant	Zakher
Shops and Offices	Madhi Eng. Consultant	Al Sanaiya
Labour Camp	Oasis Arch. Eng. Consultant	Al Khrair
Mosque	Modern Design Eng. Consultant	Al Hayer

*We also did soil investigations for more than 8000 villas and buildings in Al Ain.

LIST OF CONSULTANTS

Acad Engineering Consulting Office
ADC Engineering Consultants
Adnan Saferini Engineering Consultant
Aebila Engineering Consultant
Agyad Engineering Consultant
Al Aabed Engineering Consultant
Al Nashmi Engineering Consultant
Al Ajial Engineering Consultant
Al Ajmi Engineering Consultant
Al Amara Al Sharqia Engineering Consultant
Al Asala Engineering Consultant
Al Banfsaj Engineering Consultant
Al Bayan Engineering Consultant
Al Bayat Architects Consultant Engineers
Al Bena Engineering Consultant
Al Bunyan Engineering Consultant
Al Deia Engineering Consultant
Al Eman Engineering Consultant
Al Emirates Al Misriya Engineering Consultant
Al Fairuz Architect & Planning Bureau
Al Faraana Engineering Consultant
Al Fatah Engineering Consultant
Al Hili Engineering Consultant
Al Hosn Engineering Consultant
Al Howar Engineering Consultant
Al Kheali & Al Ameri Consulting Engineers
Al Madeena Engineering Consultant



مركز الامارات لفحص المواد
Emirates Center For Mat. Testing

Al Magrib Al Arabi Engineering Consultant
Al Manara Engineering Consultant
Al Maqam Engineering Consultant
Al Mdain Architect Consulting Engineers
Al Mukthar Engineering Consultant
Al Qaseem Engineering Consultant
Al Qaser Al Masei Architect & Engineers
Al Qaser Architect & Engineering
Al Qimma Engineering Consultant
Al Raqi Engineering Consultant
Al Safa Engineering Consultant
Al Salaam Consulting Architects & Engineers
Al Sultan Engineering Consultant
Al Tasheed Engineering Consultant
Al Thaya Engineering Consultant
Al Yasat Engineering Consultant
Al Youm Engineering Consultant
Alpha Beta Engineering Consultant
Arab Consultant
Arab Engineering Consultant
Architect & Planning Group
Architect Design Center
Arco Al Ain Engineering Consultant
Associated Architects
Bin Hamdoon Engineering Consultant
Burj Al Arab Engineering Consultant
Buraq Architect Design
Buraq Al Arab Engineering Consultant
Castels Engineering Consultant
Civilization Consulting Office
Conin Incorp. Consultant

تليفون: 037222223 - فاكس: 037214848

Tel. : 03-7222223 - Fax: 03-7214848

ص ب: 18186 - العين - الإمارات العربية المتحدة

P.O Box: 18186 - ALAIN - U. A .E



مركز الامارات لفحص الاموال
Emirates Center For Mat. Testing

Conser Consulting Engineers
Consultant Group International
Creativity Engineering Consultant
Crown Engineering Consultant
Crystal Engineering Consultant
Dar Al Emerat Engineering Consultant
Al Qaseem Engineering Consultant
Dar Al Handasa & Al Emara Engineering Consultant
Dar Al Zein Engineering Consultant
Debaja Architect & Engineers
Development Group Architect & Engineering
Dewan Architects & Engineering Consultant
Dream House Engineering Consultant
East Buildings Engineering Consultant
Eastern Engineering Consultant
Emicon Consulting & Architects
Emirates & Egyptian Engineering Consultant
Emirates Engineering Consultant
Emirates Eye Engineering Consultant
Qurtoba Engineering Consultant
Etfak Al Watane Engineering Consultant
Events Specialist Project United
Fine Arts Consulting Engineers
Funoon Al Amara Engineering Consultant
Golden Gate Engineering Consultant
Golden Planner Consultant
Granada Architect & Consulting Engineers
Handasat Al Amara Consultant
Helal and Partners
Hospicio A.B. Architects and Engineers
Hyder Consulting



مركز الامارات لفحص المواد
Emirates Center For Mat. Testing

Islamic Architect Consulting Engineers
Ital Consultant
Kojakian Engineering Consultant
Kurtoba Engineering Consultant
Labaei Engineering Consultant
Lamsa Engineering Consultancy
Legend Engineering Consultant
Line Architect & Consultant
Line Engineering Consulting Office
Link Engineering Consultant
Madhi Engineering Consultant
Mahmod Ahmed Mahmod Engineering
Consultant
Maqta Bridge Consultancy Engineering
Mashel Consultant Engineers
Matrix Engineering Consultant
Modern Designs Engineering Consultant
Modern Architecture & Consultant
Modern Vision Consulting Engineering
Mohamed Y. Wahby Engineering Consultant
Murshad Engineering Consultant
National Engineering Consultation Group
Nikahat Sahad Engineering Consultant
Parc International Consultants
Private Department
Qurtoba Consultant Engineers
Rootage Engineering Consultant
Safeer Engineering Consultant
Salman Engineering Consultant
Sara Consultant Engineers
Scanted Planning Consultant



مركز الامارات لفحص المواد
Emirates Center For Mat. Testing

Shankland Cox
Sky Scrappers Engineering Consultant
Smart Home Engineering Consultant
Space Engineering Consultant
Spectrum Engineering Consultant
Suihan Engineering Consultant
SWED Power
Technical Engineering Consultant
Today Engineering Consultant
Trans Engineering Consultant
Arcal Engineering Consultant



تليفون: 037222223 – فاكس: 037214848
ص ب: 18186 – العين – الإمارات العربية المتحدة
Tel. : 03-7222223 – Fax: 03-7214848
P.O Box: 18186 –ALAIN – U. A .E

LIST OF CONTRACTORS

Abdul Salam Gen. Cont. Est.
Abu Ghali Gen. Cont. Est.
Abu Hashed Gen. Cont. Est.
AC Power Contracting & Electro Mechanical
Co.
Abu Dhabi Int'l Ready Mix & Pre-Cast
Adwaa Al Mustaqbal Gen. Cont. Est.
Al Ain Towers Gen. Cont. & Maint. Est.
Al Barjal Building & Cont. Co.
Al Buhaira Gen. Cont. Est.
Al Adwaa Gen. Cont. Est.
Al Ain Towers Gen. Cont. Est.
Al Ain International Project
Al Basra Gen. Cont. Est.
Al Bunyan Gen. Cont. Est.
Al Dahleez Gen. Cont. Est.
Al Diwaf Gen. Cont. Est.
Al Diar Gen. Cont. Est.
Al Duroob Gen. Cont. Est.
Al Emaar Gen. Cont. Est.
Al Esami Gen. Cont. Est.
Al Eslah Gen. Cont. Est.
Al Esrar Gen. Cont. Est.
Al Etqan Al Handasi Gen. Cont. Est.
Al Fakherah Gen. Cont. Est.
Al Fan Al Khaleed Gen. Cont. Est.
Al Fagh Gen. Cont. Est.
Al Freej Gen. Cont. Est.
Al Hadara Gen. Cont. Est.
Al Hashimi Gen. Cont. Est.

Al Inshirah Gen. Cont. Est.
Al Israr Gen. Cont. Est.
Al Gais Gen. Cont. Est.
Al Ghafly Cement Products
Al Kahaf Gen. Cont. Est.
Al Khalidiya Concrete Est. for Ready Mix
Al Kandeel Gen. Cont. Est.
Al Mahala Gen. Cont. Est.
Al Maharjan Gen. Cont. Est.
Al Manama Gen. Cont. Est.
Al Mashriq Gen. Cont. Est.
Al Memas Gen. Cont. Est.
Al Mirsal Gen. Cont. Est.
Al Mihri Cont. Co.
Al Mothalath Al Fedi Gen. Cont. Est.
Al Mothamoda Gen. Cont. Est.
Al Mufeed Gen. Cont. Est.
Al Munas Gen. Cont. Est.
Al Muntasir Gen. Cont. Est.
Al Murabaa Gen. Cont. Est.
Al Nahir Gen. Cont. Est.
Al Najah Gen. Cont. Est.
Al Najim Gen. Cont. Est.
Al Nakheel Gen. Cont. Est.
Al Nasrah Gen. Cont. Est.
Al Nasir International Gen. Cont. Co.
Al Noor Al Safah Gen. Cont. Est.
Al Noor Al Sateh Gen. Cont. Est.
Al Ponien Al Saed Gen. Cont. Est.
Al Qanal Gen. Cont. Est.
Al Resalah Gen. Cont. Est.

Al Riyad Gen. Cont. Est.
Al Romouz Gen. Cont. Est.
Al Safa Castle Gen. Cont. Est.
Al Sahara Gen. Cont. Est.
Al Shaab Gen. Cont. & Agr'l. Est.
Al Shaghour Gen. Cont. Est.
Al Sham Gen. Cont. Est.
Al Sundus Cont. & Gen. Maint. Est.
Al Tameer Al Hadari Gen. Cont.
Al Tawariq Gen. Cont. Est.
Al Yazrip Gen. Cont. Est.
Al Wadeh Gen. Cont. Est.
Al Watter Gen. Cont. Est.
Al Zahir Gen. Cont. Est.
Al Zarooni Gen. Cont. Co.
Anbar Al Sharq Gen. Cont. & Maint. Est.
Angham Al Amara Gen. Cont. Est.
Arab Best Gen. Cont. Est.
Arabian Construction Company
Asir Al Tanmiya Gen. Cont. Est.
Bab Al Khair Gen. Cont. Est.
Beti Bin Khatim Gen. Cont. Est.
Bilrabook Gen. Cont. Est.
Bin Alfi Gen. Cont. Est.
Bin Al Mas Gen. Cont. Est.
Bin Alwan Gen. Cont. Est.
Bin Darwish Gen. Cont. Est.
Bin Fadel Al Mazroui Ready Mix
Bin Harmal Cont. & Irrigation Est.
Bin Maktoum Cement Est.
Building Arts Gen. Cont. Est.



مركز الامارات لفحص المواد
Emirates Center For Mat. Testing

Buniyan Al Majed Gen. Cont. Est.
CEMIX
Dar Al Aman Gen. Cont. Est.
Desert Castle Gen. Cont. Est.
Elasei Gen. Cont. Est.
Elenco for Maint. Co.
Emirates Link Maltouro
Eshraqet Mostakbal Gen. Cont. & Maint. Est.
Falaj Hazaa Gen. Cont. & Maint. Co.
Fan Al Amara Gen. Cont. & Maint. Co.
Far East Cont. Est.
Future House Gen. Cont. Est.
Ghabat Al Asad Gen. Cont. & Maint. Est.
Ghantooth Gen. Cont. Est.
Giffin Traffic Gen. Cont. Est.
GINCO
Gulf Towers Gen. Cont. Est.
Humaid Al Arti Gen. Cont. Est.
Ideal Cont. Est.
International Mab for Bldg. & Cont. Est.
Kasif Gen. Cont. Est.
Luluat Al Ain Gen. Cont. Est.
Modern Al Dar Gen. Cont. Est.
Modern Ready Mix Est.
Modern Technical Gen. Cont. Est.
Mohd Al Niyadi Gen. Cont. Est.
Mohd Aslam Gen. Cont. Est.
Mohd Sarhan Gen. Cont. Est.
Nael Blocks & Cement Products
Nahel Gen. Cont. Est.
Nakheera Al Dhahery Gen. Cont.



مركز الامارات لفحص المواد
Emirates Center For Mat. Testing

Est.

Naseej Al Amara Gen. Cont. Est.

Naseem Al Sharq Building & Cont.

Nasrallah Gen. Cont. Est.

Olen Home Emirates Cont. Co.

Ocean Ready Mix & Pre-Cast

Qasir Al Hadara Gen. Cont. Est.

Qalat Hama Gen. Cont. Est.

Qubat Al Ain Gen. Cont. Est.

Qwaed Al Ain Gen. Cont. Est.

Rafha Gen. Cont. Est.

Ramalla Gen. Cont. Est.

Rawabi Al Khaleej Gen. Cont. Est.

Ready Mix Abu Dhabi Ltd.

Reliance Metal Cont. Co.

Ruba Al Andalus Gen. Cont. & Maint. Est.

Safenat Gen. Cont. Est.

Safein Gen. Cont. Est.

Sigma Gen. Cont. Est.

Sisco Gen. Cont. Est.

Shams Al Amara Gen. Cont. Est.

Sultan Bad Gen. Cont. Est.

Tawam Gen. Cont. Est.

Tawam United Ent.

Towam Oasis Gen. Cont. Est.

Technical Engineering Construction

Thani Khalifa Al Nuaimi Gen. Cont. Est.

The Hall Gen. Cont. Est.

Top House Gen. Cont. Est.

Traditional Land Gen. Cont. Est.

Tre Mix

Truth Gen. Cont. Est.

Unibetton Ready Mix

تليفون: 037222223 - فاكس: 037214848
ص ب: 18186 - العين - الإمارات العربية المتحدة

Tel. : 03-7222223 - Fax: 03-7214848
P.O Box: 18186 - ALAIN - U. A .E

LIST OF EMPLOYEES

Engr. Shk. Saeed Bin Ahmed Bin Suroor Al Dhaheri

General Manager

NAME	QUALIFICATION	JOB	EXPERIENCE (years)
Engr. Moh'd Al Moumani	BSc Civil Engineer	Geotechnical Lab. Manger	25
Engr. Elie salloum	BSc Geology	lab Supervisor	13
Engr. Moh'd Elfattah	BSc Geology	Geophysics manager	13
Engr. Ehab Mohamed	BSc Geology	Geotechnical Engineer	10
Engr .Shams Naveed	BSc Geology	Geotechnical Engineer	6
Engr. Moh'd Nabil	BSc chemistry	Deputy quality manager	10
Mr. Amr al Shaikh	BSc accountancy & Bus. Administration	Accountant	16
Mr .Hassan Shehata	High School	Public Relation Officer /PRO	12
Mrs. Elsa Lyn G. Timbol	Secretarial	Secretary	18
Mr. Darren Camacho	Secretarial	Secretary	1
Mr. KOYES AHMED	High School	Technician	8
Mr. Kamal Ahmad	High School	Technician	10
Mr. Moh'd Soforuddin	BSS Pass	Technician	10
Mr. Qasim Din Mohamed	High School	Site Foreman	7
Mr. Abdul Salam	B. School	Foreman / Driver	15
Mr. Amjad Husain	S. School	Driller	10
Mr. Javed	B. School	Driller	7
Mr. Pardes Khan Qaisar	High School	Driller	10
Mr. Moh'd Abdul Samad	High School	Driller	10
Ten Persons	B. School	Driller Assistant	6
Three Person	B. School	Laboratory Assistant	4